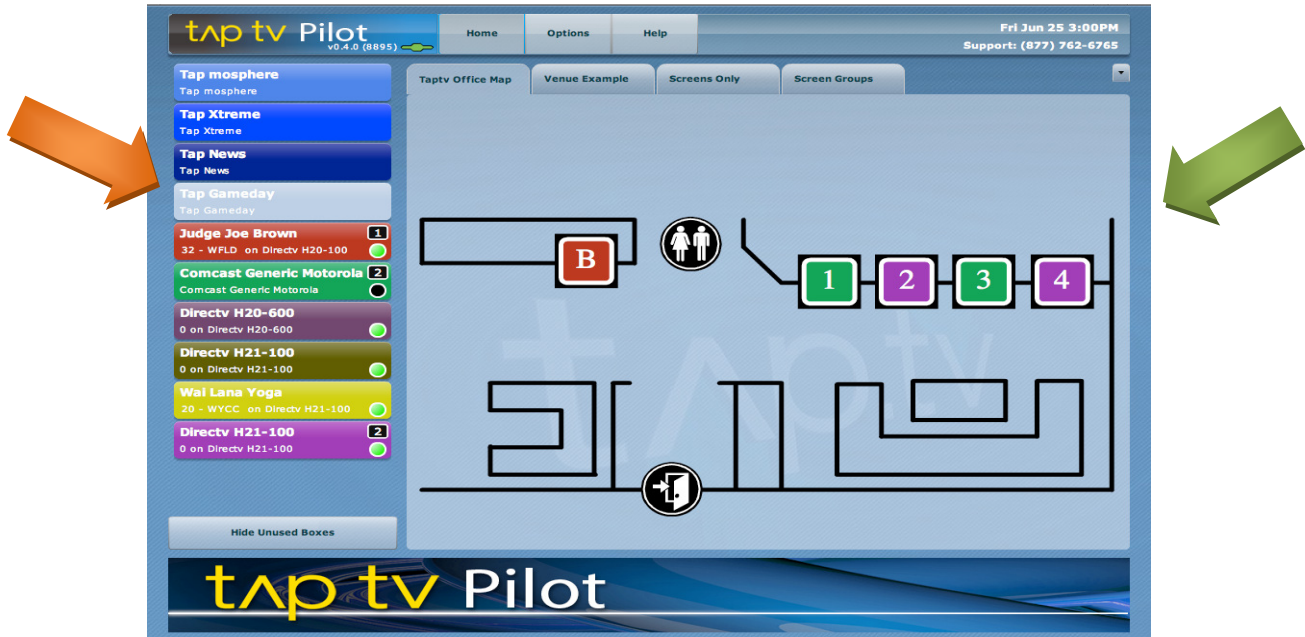


Pilot Quick Start

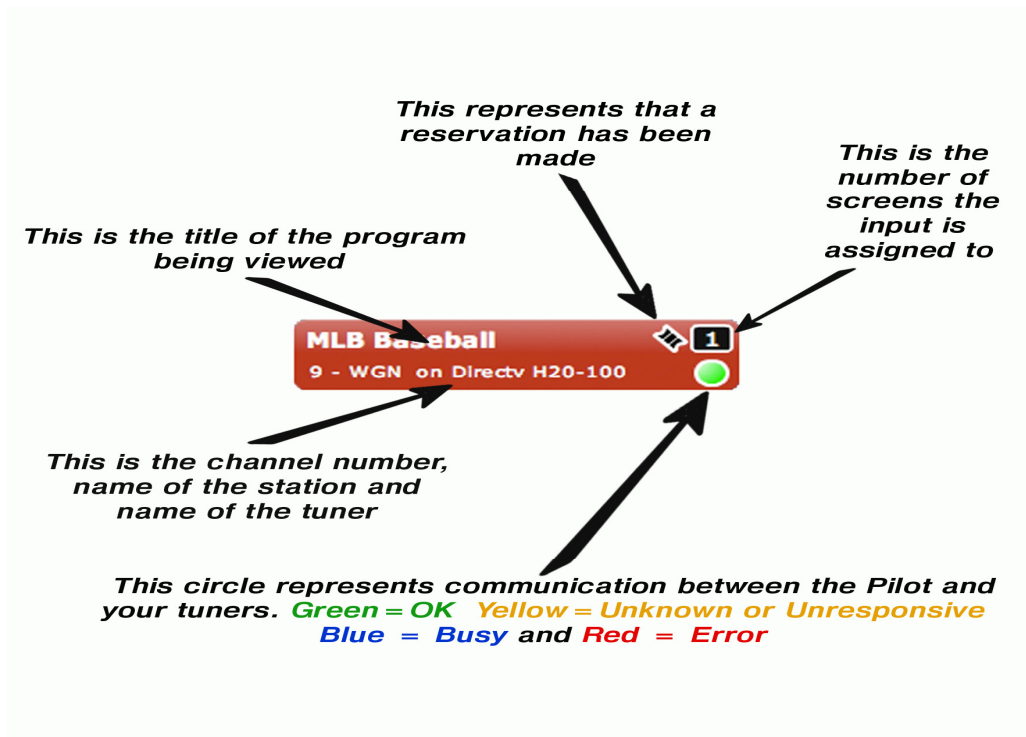
24/7 support is available at (877) ROC N ROL or (877)762-6765



The **Input List (orange arrow)** appears on the left side of the Pilot Home Screen and shows all your possible programming options. Included are Tap channels, Cable and DirecTV tuners, as well as any other inputs connected to your system. All inputs are color coded for easy identification.

The **Output Panel (green arrow)** shows the available TV 'outputs' and where they are located in your venue. When an Input is assigned to a TV, the icon colors will be the same.

All selections are made by touching the Pilot screen.



Put a TAP channel on a TV:

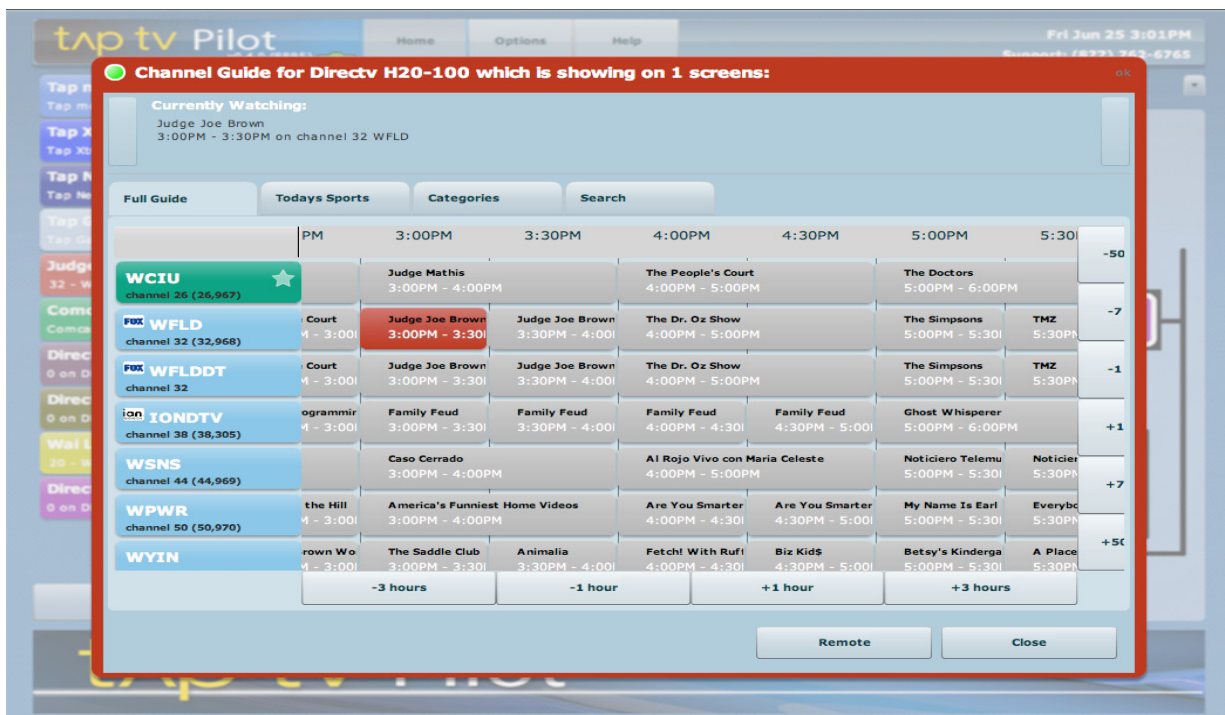
1. Touch the desired Tap.tv channel from the Inputs List.
2. Select the screen(s) from the Output Panel you would like it to play on.
3. Quick check: The color of the TV icon will match the Input icon when finished.

Select a program and assign it to a TV:

1. Touch the desired tuner from the Inputs List and a drop down box will appear.
2. From the drop down box select Guide.
3. The Pilot will default to the Full Guide where you can select the program that you would like to appear on your TV. Close the Guide.
4. Important: Re-select the tuner and touch the corresponding TV icon from the Output Panel where you would like your selection to be displayed. The TV icon will appear the same color as the Input.

Select a sporting event and assign it to a TV:

1. Touch the desired tuner from the Inputs List and a drop down box will appear.
2. From the drop down box select Guide.
3. The Pilot will default to the Full Guide, to change to the Sports Guide simply select the tab labeled Today's Sports.
4. Filter first by sport, then by team using the drop down boxes and select the desired sporting event. Close the Guide.
5. Important: Re-select the tuner and touch the corresponding TV icon from the Output Panel where you would like your selection to be displayed. The TV icon will appear the same color as the Input.



Search for a program by title or time within the Guide:

1. Select the desired tuner from the Inputs List and from the drop down box select Guide.
2. The Pilot will default to the Full Guide, so to Search for a program by Title or Start Time simply select the tab labeled Search.
3. Search by either Title or Start Time by typing in the available information. Select the desired program and close the guide.
4. Important: Re-select the tuner and touch the corresponding TV icon from the Output Panel where you would like your selection to be displayed. The TV icon will appear the same color as the Input.

Select a channel number and assign it to a TV:

1. Select the desired tuner from the Inputs List and from the drop down box select Remote.
2. Enter the channel number and then touch Send. If the Remote does not close automatically, select Close.
3. Important: Re-select the tuner and touch the corresponding TV icon from the Output Panel where you would like your selection to be displayed.

Make a reservation: *(Choose a program to automatically tune in at its start time)*

1. Select the desired tuner from the Inputs List and from the drop down box select Guide.
2. Scroll through the desired guide and touch the program that you would like to appear on your TV.
3. At the designated start time, the tuner will automatically change to the reservation and any TVs currently assigned to the tuner will change to the selected program.

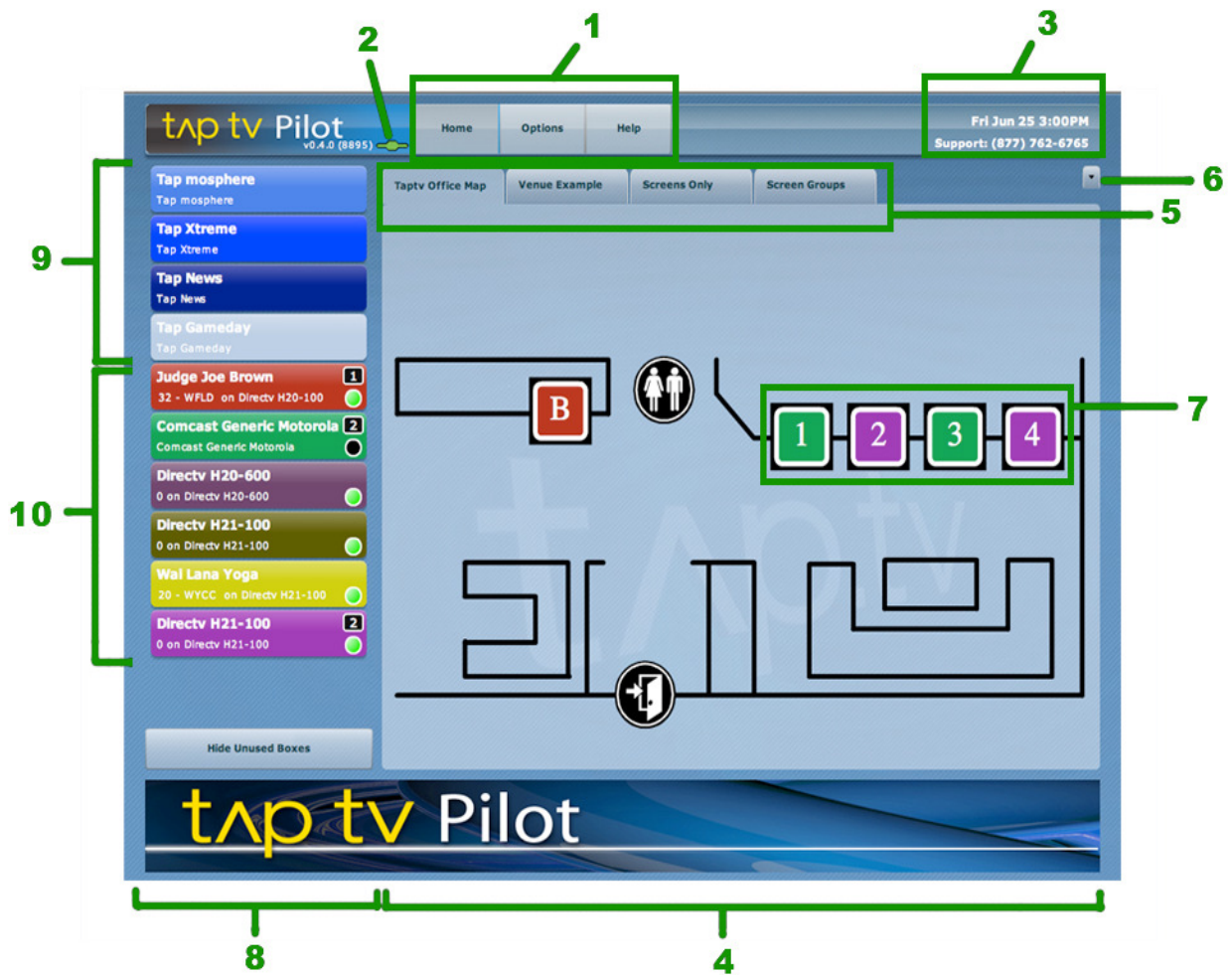
See a reservation that is set on a tuner: When a reservation has been set for a tuner a small ticket icon will appear on the tuner.

1. Select the tuner and choose Guide.
2. The top panel will indicate 'Currently Watching' and the arrows at each side of the panel will allow you to skip forward to see what is scheduled in the future or return to the current selection.

Save the current setup as a Preset: *(Presets are arrangements of TVs and Inputs that can be saved for later use. This allows you to set up the entire venue and quickly return to these settings.)*

1. On the HOME screen make your desired channel selections and assign them to the appropriate screens.
2. From the Menu Bar choose OPTIONS then select the Presets tab.
3. Select Capture New and you will be directed to name the Preset.
4. To schedule the Preset, touch the "SCHEDULE" button of the desired Preset and use the + and - buttons to change the time.
5. To finish, touch the Select button and the Preset will automatically override your system at that time.

Components of the Pilot Screen



1. Main Menu - Used to access the Home, Options and Help screens
2. Connection Indicator - Monitors the Pilot's connection to the Pilot Server
3. Date, Time, Support Number – General information
4. Output Panel - Where TV screens and all outputs will appear for selection
5. Output Panel Tabs- Alternate views of the TV screens are available here
6. Output Panel Dropdown - Used to select a different output panel to view
7. TV Screen Icon - Each will represent one TV screen in your venue
8. Inputs List - The available tuners and inputs that you can assign to your TV screens
9. Tap Channels - Tap specific programming available for your use and enjoyment
10. Input and Tuner Icons - Represents all other available inputs and tuners for your venue